

# Occasional Papers on Mollusks

Published by

THE DEPARTMENT OF MOLLUSKS  
Museum of Comparative Zoology, Harvard University  
Cambridge, Massachusetts

---

VOLUME 4

27 MARCH 1981

NUMBER 59

---

## OXYCHILUS (DROUETIA) AGOSTINHOI NEW SPECIES (STYLOMMATOPHORA: ZONITIDAE) FROM THE AZORES ISLANDS, ITS ANATOMY AND PHYLOGENETIC RELATIONSHIPS

THE REV. ANTÓNIO M. FRIAS MARTINS

Department of Zoology  
University of Rhode Island  
Kingston, Rhode Island 02881

**ABSTRACT.** *Oxychilus (Drouetia) agostinhoi* n. sp. (Stylommatophora, Zonitidae) from Santa Maria, Azores, shares some characteristics with the subgenus *Ortizius* Forcart, but is placed in the subgenus *Drouetia* Gude on the basis of conchological and penial characters. The phylogeny of those species of *Oxychilus* Fitzinger endemic to the Azores supports the hypothesis of Riedel (1964) that the subgenera *Ortizius* and *Drouetia* evolved in the Azores from a pre-*Ortizius* type of mollusk which arrived from Europe, probably during the Tertiary. Based only upon its resemblances to Azorean species of the subgenera *Drouetia* and *Ortizius*, for which there is no fossil record, this new species is seen as having separated from the branch leading to *Oxychilus (Drouetia) atlanticus* s. l. before the origin of the subgenus *Atlantioxychilus* Riedel.

### INTRODUCTION

The first significant publication on the land Mollusca of the Azores was by Morelet and Drouet (1857) which was revised and expanded by Morelet in 1860. Nobre visited the islands in 1919 and published two papers on the fauna in 1924 and 1930. Zonitid material was collected during the 1957 Swedish Zoological Expedition under the direction of P. Brink and E. Dahl and was described by Riedel in 1964. Backhuys (1975) gave a thorough analysis of the land mollusks collected in 1969 by the team integrated in the Inter-

national Project for the Investigation of the Macaronesian Area, relying on Riedel (1964) when dealing with the Zonitidae.

Collections are still not sufficient for a complete understanding of the distribution and relationships of Azorean mollusks either within or outside the archipelago. The purposes of this paper are to describe a new species of *Oxychilus* and to discuss the relationships and evolution of the endemic subgenus *Drouetia* Gude, particularly its affinities with the subgenus *Ortizius* Forcart. The results support the hypothesis of Riedel (1964) that both groups arose in the Azores from a pre-*Ortizius* type snail which had arrived from Europe, probably during the Tertiary.

The nine islands comprising the Azorean archipelago (Plate 28, fig. 1) lie on the mid-Atlantic ridge, 1450 km west of Portugal and 1776 km east-south-east of Newfoundland. Santa Maria Island (Plate 28, fig. 2) has an area of 97 km<sup>2</sup> and its highest point is only 580 m above sea level. It has ten endemic species and subspecies of land snails, the largest number of any of the islands. São Miguel Island, 80 km north and eight times larger, has only five endemic

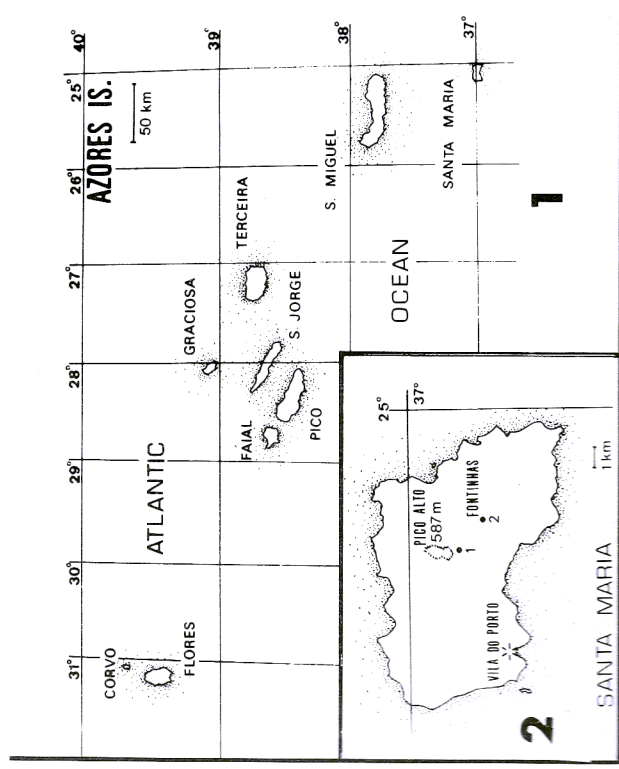


Plate 28

Fig. 1. Map of the Azores Islands.

Fig. 2. Map of Santa Maria Island, showing the collecting stations.

species. It is possible that, after a thorough study of the geological and biological history of the Azores, Santa Maria Island will prove to occupy a key position in the colonization of the archipelago.

#### ACKNOWLEDGMENTS

I wish to express my gratitude to Drs. Ruth D. Turner and Kenneth J. Boss of Harvard University and Dr. Robert C. Bullock of the University of Rhode Island for their continued assistance and comments on the manuscript.

#### MATERIALS AND METHODS

Specimens for anatomical work were killed by drowning in freshwater overnight and then preserved in 70% ethanol. No histological preparations or studies were made.

Specimens for examination with the Scanning Electron Microscope (SEM) were first cleaned in distilled water and then in 70% and 90% ethanol, using an ultrasonic cleaner for 10 seconds at each step. They were then mounted on a stub using double coated tape. Radulae were first cleaned in KOH, washed in distilled water and then carried to absolute ethanol to harden the teeth. To avoid destruction of the teeth, ultrasonic cleaning was reduced to two seconds per step. The radula ribbon was mounted on a circular cover glass to which it adhered when dry and the cover slip was attached to the stub with double coated tape. All specimens were covered with carbon and gold-palladium in a Denton DV-502 vacuum evaporator and examined using a ISI Mini-SEM, located in the Department of Zoology, University of Rhode Island.

Systematic work was based on the studies of Wollaston (1878), Gude (1911), Forcart (1957), Zilch (1959) and Riedel (1957, 1964, 1966). Terminology generally follows that of Fretter and Graham (1962) for the description of the soft parts, Rigby (1963) for the digestive and reproductive systems and Simroth (1908), Bargmann (1930) and Franc (1968) for the nervous system.

#### STATION DATA

Santa Maria Island, Azores Islands: *Station 1*, Pico Alto, south slope, at 500 m. In primitive forest of *Pittosporum undulatum* Vent, *Erica azorica* Hochst, *Laurus azoricus* (Seub) and the introduced *Hedychium gardnerianum* Roscoe. The animals had a special preference for fallen leaves of *Hedychium*. a. 1-XI-1974, 1 dead specimen; b. 9-X-1975, 1 dead and 7 live specimens.

*Station 2.* Fontinhas, Perimetro Florestal, at 300–400 m of altitude in forest of *Cryptomeria japonica* Don and *Myrica faya* Ait with an undergrowth of *Hedychium*. a. 1-XI-1974, 1 live and 1 dead specimen; b. 10-X-1975, 10 live and 8 dead specimens.

## SYSTEMATICS

Family ZONITIDAE Mörch 1864

Subfamily ZONITINAE Mörch 1864

Genus *Oxychilus* Fitzinger 1833

*Oxychilus* Fitzinger 1833, Beiträge Landesk. Oesterreich's unter der Enns [in] Verein fuer Vaterlaendische Geschichte . . ., [Vienna] 3 (3): 100. Type species, *Helix cellaria* Müller, subsequent designation Herrmannsen 1847.

Shell thin, translucent, smooth, somewhat glossy, disc-shaped, moderately umbilicate to non-umbilicate; whorls about 6; sutures not impressed; axial striae indistinct; last whorl elliptical in profile; aperture oblique, lip simple, sharp.

Subgenus *Drouetia* Gude 1911

*Drouetia* Gude 1911, Proc. Malacological Soc. London 9:272. Type species, *Helix atlantica* Morelet and Drouet, original designation.

Foot tripartite, right posterior tentacle retractor crossing the reproductive organs. Shell imperforate, hyaline, shiny, smooth, sculpture (at 400×) of extremely fine spiral lines crossed by axial threads.

*Oxychilus (Drouetia) agostinhoi*, new species<sup>1</sup>

Plates 29–35

*Type Locality.* Fontinhas, Perimetro Florestal, 300–400 m, Santa Maria Island, Azores Islands.

*Type Repositories.* Holotype and two paratypes, Museum of Comparative Zoology, nos. 288926, 288927, 288928. Additional paratypes at the American Museum of Natural History (1 sp.) Academy of Natural Sciences, Philadelphia (1 sp.), National Museum of Natural History, Washington, D.C. (1 sp.), British Museum (Natural History), London (2 sp.), Musée d'Histoire

<sup>1</sup>By naming this species after the late Ten.-Cor. José Agostinho, I express my deepest homage to an eminent Azorean scientist and a very dear friend.

Naturelle, Paris (1 sp.), Musée d'Histoire Naturelle "Gr. Antipa", Bucharest (1 sp.), and collection of the author.

*Description. Shell* (Plate 30, Plate 31, figs. 5-6). Shell dextral, small, reaching 5.1 mm in maximum diameter, disc-shaped, non-umbilicate, whorls 4-4¼, horn-colored or somewhat greenish, with a greasy shine, transparent to translucent, apparently smooth, thin, fragile; first whorls whitish; position of old peristomes persisting as irregularly spaced light and dark axial bands; last whorl elliptic in profile; aperture oblique, depressed; peristome simple, sharp, not continuous; parietal callus whitish, covering the umbilical region where it forms a cup-like depression (Plate 31, fig. 5); suture very shallow; growth lines irregular and very weak; high magnification reveals the presence of very fine regular spirals (Plate 31, fig. 6). Measurements of the holotype and adult or nearly adult paratypes (with 4 whorls or more) are given in Table 1.

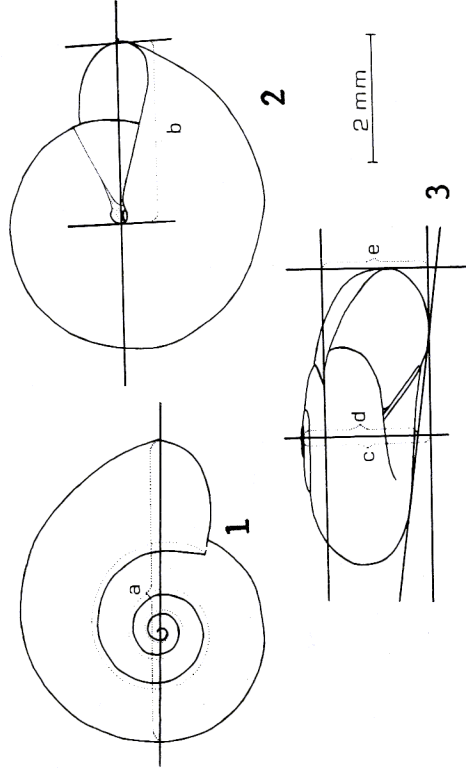


Plate 29

Figs. 1-3. Outline of the holotype, *Drouetia agostinhoi*, showing how the different measurements were taken. a, maximum diameter; b, aperture width; c, vertical height; d, oblique height; e, aperture height.

*Animal.* Neck dark-blue or brownish, becoming gradually lighter toward the foot and with a ring of more intense hue just above sole of foot; anterior tentacles small, grayish; posterior tentacles moderately long, black, their retractor muscles visible through skin; foot tripartite, a uniform light-gray to white; mantle with small, unevenly distributed patches of dark pigment mainly over dorsal region, visible only through the ventral surface of the



shell; mantle border black; genital opening marked by a whitish hue behind posterior right tentacle, about midway on neck.

Table 1. Measurements of the shells of the holotype (#315) and adult or nearly adult paratypes of *Oxychilus (Drouetia) agostinhoi*. Measurements in mm. The specimen number refers to my own collection. The mean is given as  $X \pm$  one standard deviation. For locality see text. For measurements see Plate 29, figs. 1-3.

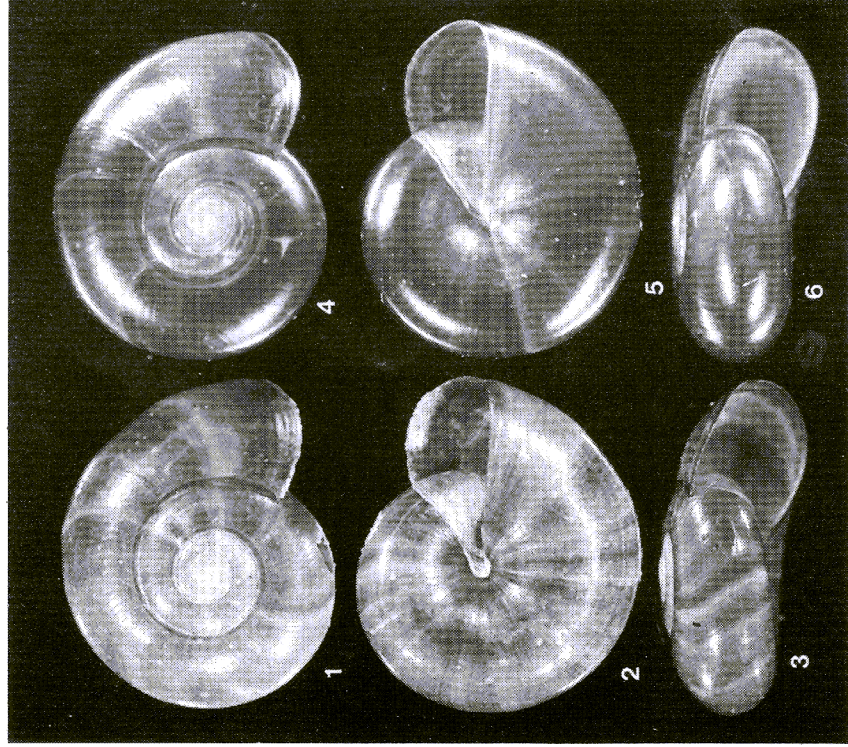
| Specimen number | Locality | Maximum diameter | Oblique height | Vertical height | Aperture height | Aperture width | Number of whorls |
|-----------------|----------|------------------|----------------|-----------------|-----------------|----------------|------------------|
| 315             | 2b       | 5.1              | 2.0            | 2.2             | 1.8             | 3.0            | 4 $\frac{1}{4}$  |
| 506             | 2b       | 5.0              | 2.0            | 2.2             | 1.8             | 3.0            | 4                |
| 504             | 2b       | 5.0              | 1.9            | 2.2             | 1.8             | 3.0            | 4                |
| 505             | 2b       | 4.9              | 1.9            | 2.1             | 1.7             | 2.9            | 4 $\frac{1}{4}$  |
| 174             | 2a       | 4.9              | 2.1            | 2.4             | 1.9             | 3.0            | 4                |
| 377             | 1b       | 4.9              | 2.1            | 2.3             | 1.9             | 2.9            | 4                |
| 514             | 2b       | 4.9              | 2.0            | 2.4             | 1.8             | 2.6            | 4                |
| 507             | 2b       | 4.8              | 2.0            | 2.2             | 1.7             | 2.8            | 4 $\frac{1}{4}$  |
| 503             | 1b       | 4.8              | 1.9            | 2.1             | 1.7             | 2.8            | 4 $\frac{1}{4}$  |
| 508             | 2b       | 4.7              | 1.9            | 2.0             | 1.6             | 2.9            | 4                |
| 511             | 1b       | 4.6              | 1.9            | 2.3             | 1.8             | 2.9            | 4                |
| 313             | 2b       | 4.6              | 1.9            | 2.1             | 1.8             | 2.7            | 4                |
| 509             | 1b       | 4.6              | 1.9            | 2.1             | 1.8             | 2.6            | 4                |
| 515             | 2b       | 4.6              | 2.0            | 2.2             | 1.7             | 2.5            | 4                |
| 314             | 1b       | 4.5              | 1.7            | 1.9             | 1.5             | 2.7            | 4                |
| 510             | 1b       | 4.3              | 1.8            | 2.0             | 1.7             | 2.6            | 4                |
| 312             | 2b       | 4.2              | 1.9            | 2.1             | 1.8             | 2.4            | 4                |
| Mean            |          | 4.7 $\pm$ .2     | 1.8 $\pm$ .1   | 2.2 $\pm$ .1    | 1.8 $\pm$ .1    | 2.6 $\pm$ .5   |                  |

*Radula*. (Plate 31, figs. 1-3. Plate 32). *Radula* formula:

$$\left[ \frac{(12-13)}{1-(2)} + \frac{2}{3} + \frac{1}{3} + \frac{2}{3} + \frac{(12-13)}{(2)-1} \right] \times 42 - 55$$

Central tooth shorter and narrower than laterals, tricuspid; cusps about same size, small; central cusp always thinner than laterals. First lateral higher than central, tricuspid; inner cusp small, broad; median cusp long; outer cusp smaller than inner cusp, somewhat narrower. Second lateral similar to the first lateral, larger. Marginals falciform; first marginal bicuspid, with inner cusp rudimentary and outer cusp strong, curved; other marginals unicuspid, similar to the first marginal, becoming smaller.

*Anatomy* (Plate 33): *Organs of the neck region*. Anterior tentacles with grayish to dark gray internal wall; a thin contractor



## Plate 30

Figs. 1-6. *Oxychilus (Drouetia) agostinhoi*. Shell. Figs. 1-3, holotype (MCZ 288926) (5.1 mm max. diameter); Figs. 4-6, paratype (MCZ 288928) (4.5 max. diameter).



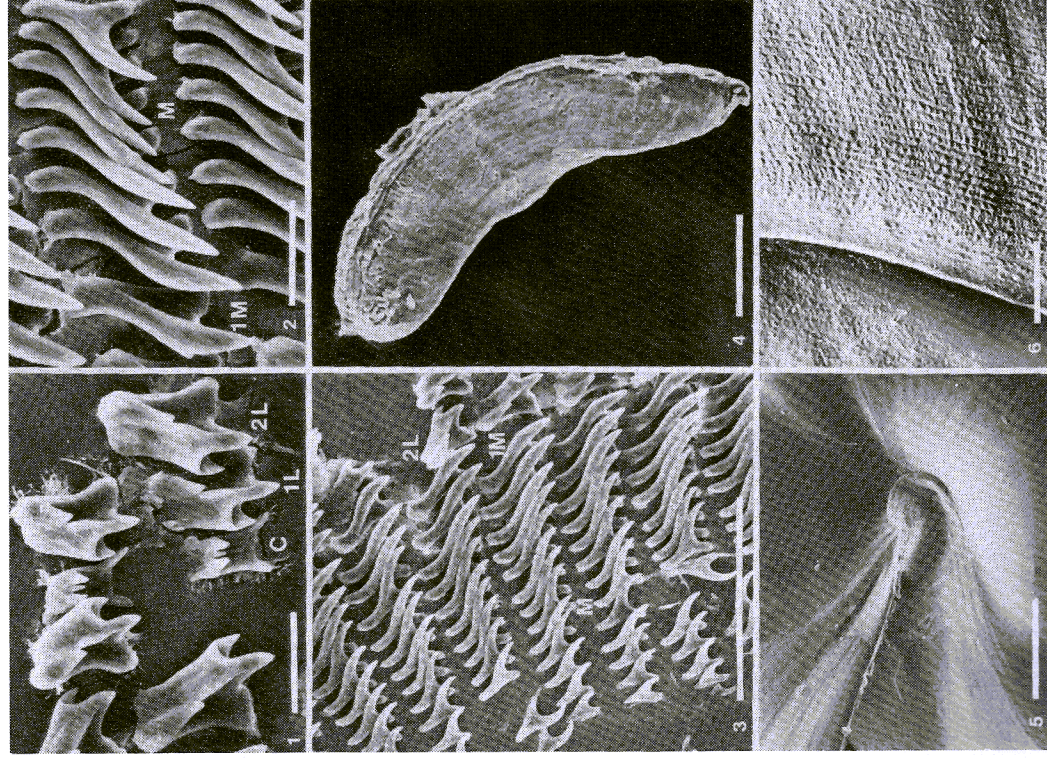


Plate 31



muscle arises near the attachment of the tentacle retractor muscle and inserts on the side of the foot; the retractor muscle adheres laterally to the cerebral ganglion and to most of the length of median lip nerve; the retractor muscle unites with the posterior tentacle retractor after receiving a nerve coming from the base of the pleural-pedal connective. Posterior tentacles bluish-black; two thin contractor muscles originate a little anterior to the insertion of the ocular nerve and attach at the base of each tentacle; right posterior tentacle retractor longer than the left, crossing the genital organs between penis and vagina. Two pairs of mucous glands dorsal to the foot open into the space between the lower lip and foot; the lower glands adhere posteriorly to the pedal ganglia, and are bordered laterally by the inner anterior pedal nerves, from which

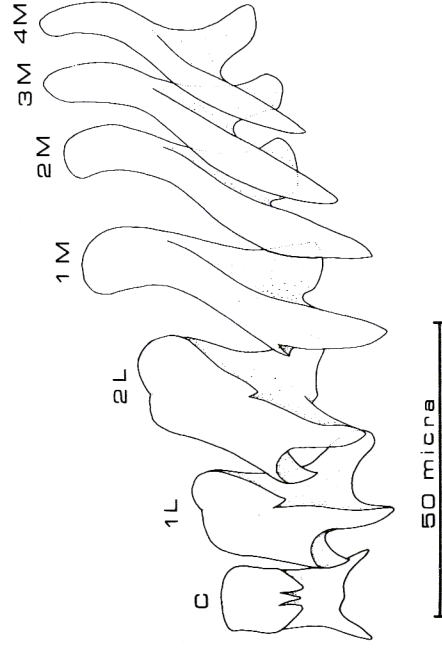


Plate 32

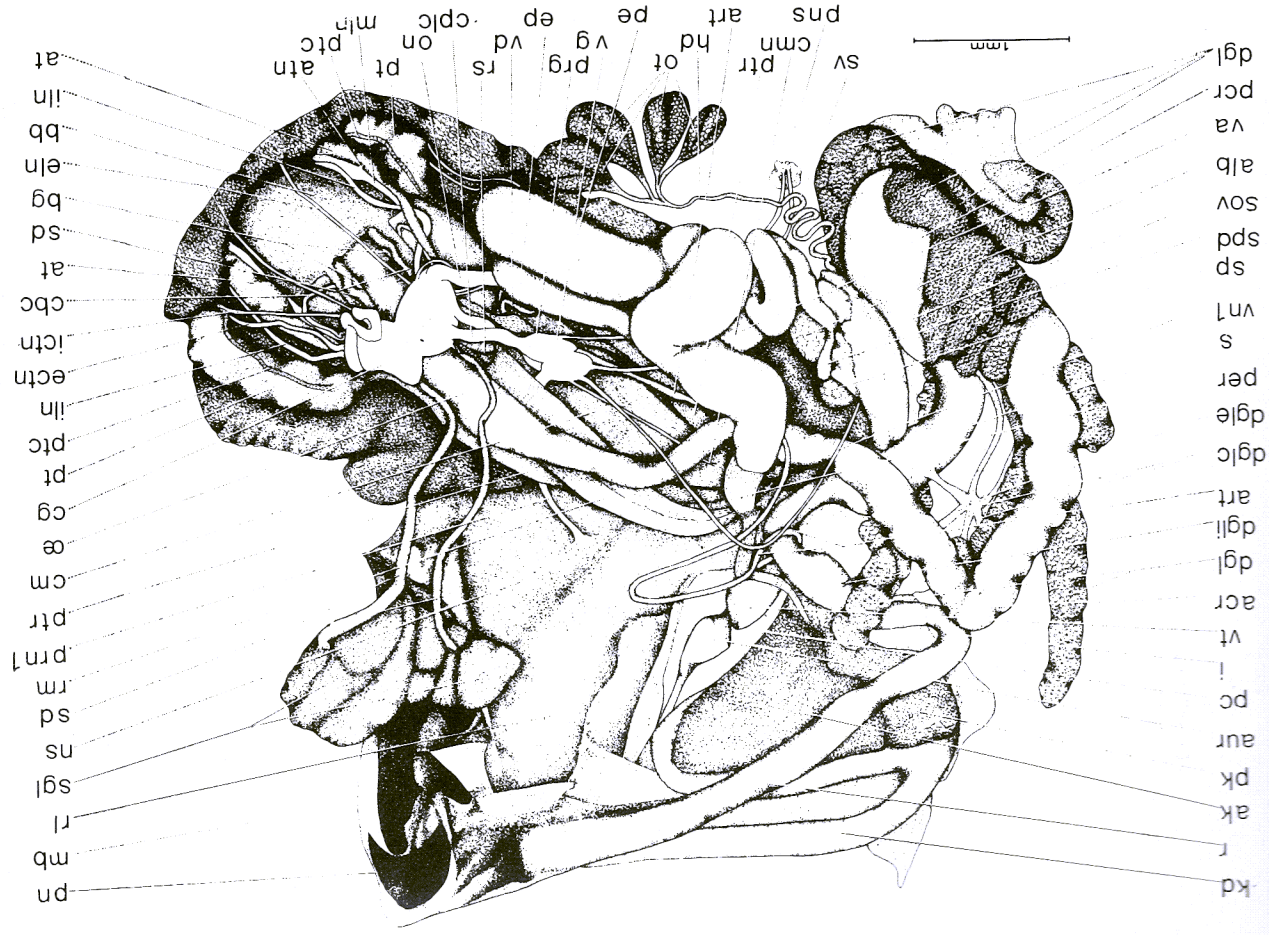
Radula of *Oxychilus agostinhoi*. C, central; 1L - 2L, first and second laterals; 1M - 4M, first to fourth marginals.

they receive one branch; the upper glands are round, half the length of the lower ones and free posteriorly and laterally.

*Reproductive system* (Plate 34, figs. 1-4): Typical of the family. Combined penis and flagellum varying from 3.3 to 5.6 mm in

Plate 31

Figs. 1-6. Radula and jaws of *Oxychilus agostinhoi*. Figs. 1-3, radula of paratype MCZ 28927 (scales = 25  $\mu$ m); Fig. 4, mandible of paratype 502 (scale = 100  $\mu$ m); Fig. 5, umbilical region of shell of paratype 508 (scale = 17  $\mu$ m); Fig. 6, microsculpture of the third whorl of shell of paratype 501 (scale = 100  $\mu$ m). C, central tooth; 1L - 2L, first and second laterals; 1M - M, first and remaining marginals.



length; penis thick, twisted posteriorly and with a medial constriction; proximal portion wrapped in a membranous sheath, the external reflection of a strong muscular sheath (fig. 2) which does not cover the constriction; flagellum thick, short; epiphallus thinner than flagellum, shorter than total length of penis and expanding rapidly from the vas deferens; internal wall of penis and epiphallus (fig. 2) with 4 to 5 longitudinal folds, stronger in penis; penis retrac-

## Plate 33

Dorsal view of dissected *Oxychilus agostinhoi*; the top of the neck was cut longitudinally and the skin reflected; a lateral cut was made on the body whorl from below the pneumostome to the top of the visceral mass, and the rectum, kidney and all the roof of mantle cavity reflected to the left; the floor of the mantle cavity was removed and most of the organs loosely separated; ovotestis and salivary glands are displaced.

|   |  |
|---|--|
| <i>acr</i> , anterior crop                    | <i>ot</i> , ovotestis                      |
| <i>ak</i> , anterior lobe of kidney           | <i>pc</i> , pericardium                    |
| <i>alb</i> , albumen gland                    | <i>pcr</i> , posterior crop                |
| <i>art</i> , artery                           | <i>pe</i> , penis                          |
| <i>at</i> , anterior tentacle                 | <i>per</i> , penis retractor               |
| <i>atn</i> , anterior tentacle nerve          | <i>pk</i> , posterior lobe of kidney       |
| <i>aur</i> , auricle                          | <i>pn</i> , pneumostome                    |
| <i>bb</i> , buccal bulb                       | <i>pns</i> , skin close to the pneumostome |
| <i>bg</i> , buccal ganglia                    | where <i>prn I</i> and <i>vn I</i> attach  |
| <i>cbc</i> , cerebro-buccal connective        | <i>prg</i> , parietal ganglion             |
| <i>cg</i> , cerebral ganglia                  | <i>prn I</i> , first parietal ganglion     |
| <i>cm</i> , columellar muscle                 | <i>pt</i> , posterior tentacle             |
| <i>cmn</i> , columellar muscle nerve          | <i>ptc</i> , posterior tentacle contractor |
| <i>dgl</i> , digestive gland                  | <i>ptr</i> , posterior tentacle retractor  |
| <i>dglc</i> , digestive gland collector ducts | <i>r</i> , rectum                          |
| <i>dgle</i> , digestive gland excretor ducts  | <i>rl</i> , roof of the lung               |
| <i>dgli</i> , digestive gland intestinal duct | <i>rm</i> , radular muscle                 |
| <i>ectn</i> , external circumtentacular nerve | <i>rs</i> , radular sac                    |
| <i>eln</i> , external lip nerves              | <i>s</i> , stomach                         |
| <i>ep</i> , epiphallus                        | <i>sd</i> , salivary ducts                 |
| <i>hd</i> , hermaphroditic duct               | <i>sgl</i> , salivary glands               |
| <i>i</i> , intestine                          | <i>sov</i> , spermoviduct                  |
| <i>ictn</i> , internal circumtentacular nerve | <i>sp</i> , spermatheca                    |
| <i>ihn</i> , internal lip nerve               | <i>spd</i> , spermathecal duct             |
| <i>kd</i> , kidney duct                       | <i>sv</i> , seminal vesicle                |
| <i>mb</i> , mantle border                     | <i>va</i> , vagina                         |
| <i>mhn</i> , median lip nerve                 | <i>vd</i> , vas deferens                   |
| <i>ns</i> , neck skin                         | <i>vg</i> , visceral ganglion              |
| <i>oe</i> , oesophagus                        | <i>vn I</i> , first visceral nerve         |
| <i>on</i> , ocular nerve                      | <i>vt</i> , ventricle                      |



tor thick, usually short, arising from the floor of the lung posteriorly and inserting on the flagellum subapically. Genital atrium very reduced. Vagina almost as thick as penis and, together with oviduct, usually half total length of penis. Perivaginal gland thick, slightly pigmented, enveloping distal portion of vagina and proximal portion of oviduct, as well as proximal end of spermathecal duct. Spermathecal duct as thick as oviduct and as long as vagina; spermatheca pinkish, slightly elongated, twice the diameter of the spermathecal duct. Oviduct short. Internal wall of vagina and oviduct, as well as that portion of spermathecal duct covered by perivaginal gland, and with numerous longitudinal folds (Plate 34, fig. 3). Spermoviduct divided into two parts: 1. distal portion, enveloped by mucous gland, as thick as vagina; 2. proximal portion, thin walled and convoluted; the internal wall of anterior half with numerous folds, posterior half smooth (fig. 3); floor of spermoviduct covered by a thick, whitish sperm groove tract, which tapers and disappears when entering oviduct (Plate 34, figs. 3-4). Prostate gland adhering to floor and right side of proximal spermoviduct, pinkish, large, somewhat quadrangular. Albumen gland about same size as proximal spermoviduct. Ootestis yellowish, composed of four oval lobes, the narrower ends of the lobes connecting with the hermaphroditic duct through moderately short and thin ducts, fused halfway in the first two lobes.

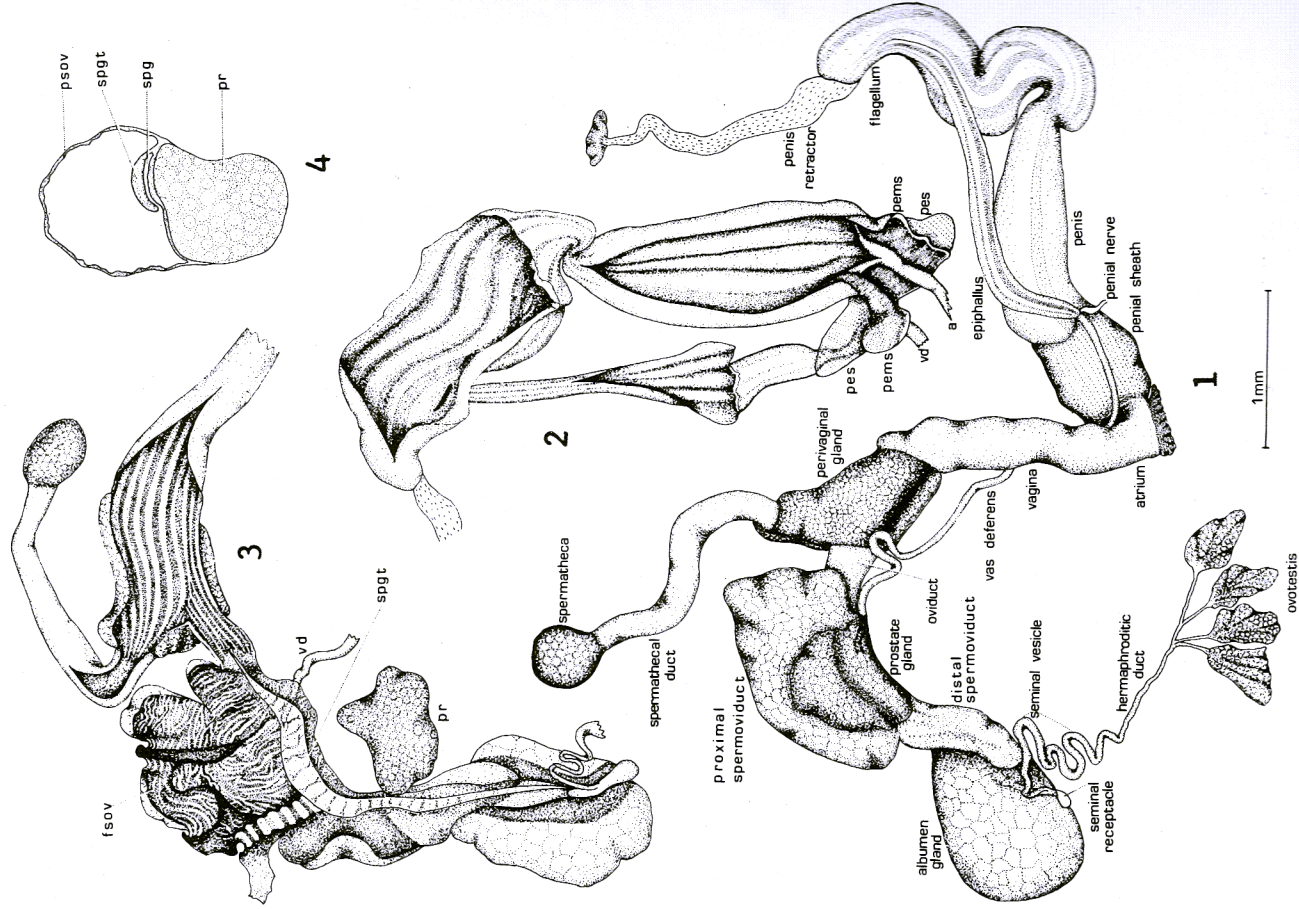
*Digestive system* (Plate 33). Buccal bulb well developed, cylindrical. Mandible (Plate 31, fig. 4) oxygnathe, semilunar in shape, strong, smooth, with a slightly curved median prominence on its free edge. Salivary glands white, well developed, fused together, forming a somewhat cylindrical mass, lying on top of the crop fitting up against the penis, spermoviduct and albumen gland. Oesophagus imperceptibly merging with the crop, which ends as a thin

---

 Plate 34

Figs. 1-4. Reproductive system of *Oxychilus agostinhoi*. Fig. 1, external morphology; Fig. 2, internal morphology of male ducts; Fig. 3, internal morphology of female ducts; Fig. 4, diagrammatic cross section of proximal spermoviduct, based on dissections and the literature.

|  |                                     |
|--|-------------------------------------|
| <i>a</i> , atrium                            | <i>psov</i> , proximal spermoviduct |
| <i>fsov</i> , folded portion of spermoviduct | <i>spg</i> , sperm groove           |
| <i>pens</i> , penial muscular sheath         | <i>spgt</i> , sperm groove tract    |
| <i>ps</i> , penial sheath                    | <i>vd</i> , vas deferens            |
| <i>pr</i> , prostrate gland                  |                                     |



fsov

3

vd

spgt

pr

psov

spgt

spg

pr

4

2

spermatheca

spermathecal duct

proximal spermoviduct

prostate gland

albumen gland

distal spermoviduct

seminal vesicle

seminal receptacle

hermaphroditic duct

vas deferens

vagina

atrium

penial gland

pes

pennis

vd

a

epiphallus

penis

penial nerve

penial sheath

penis retractor

flagellum

1

1mm

ovocastis

walled sac. Stomach small, muscular, tapering abruptly posteriorly. Intestine short, convoluted, imperceptibly merging into the non-convoluted and slightly enlarged rectum. Digestive gland dark, its two main collector ducts merge before reaching the stomach, then subdivide into four excretory ducts, two of which empty into the anterior portion of the crop, one into the posterior portion of the crop and the other one into the stomach; an independent smaller duct empties into the anterior portion of the intestine.

*Kidney* (Plate 33). Bilobed, yellowish, strongly folded internally; the anterior lobe largest, on the roof of the mantle cavity, posterior to the heart; posterior lobe in visceral mass; nephridial duct S-shaped, large, arising from the tip of the anterior lobe close to the auricle, contouring its right edge and then turning forward to follow the left of the rectum, to open at the pneumostome.

*Nervous system* (Plate 35). Typical of the family (zonitoid type). Cerebral ganglia well developed, separated by very short cerebral commissure, with 21 nerves emerging from the ganglia, six of them connectives. The single unpaired penial nerve emerges posterior to the right external circumtentacular nerve and enters the penis where the penial sheath adheres to the epiphallus. There are seven sets of paired nerves emerging from the cerebral ganglia:

1. Internal circumtentacular nerves emerge from the front portion of the ganglia, close to the cerebral commissure, and attach to the basal wall of the posterior tentacle.
2. External circumtentacular nerves arise at the latero-posterior side of the ganglia and insert on the external basal wall of the posterior tentacle.
3. Ocular nerves are very thick, arise lateral to the internal circumtentacular nerves, insert on the proximal portion of the posterior tentacle, and continue inside it up to the eye, where they enlarge.
4. External lip nerves arise anterior to the external circumtentacular nerves on the lower surface of the ganglia and insert on the sides of the upper lip.
5. Internal lip nerves originate internal to the median lip nerves and insert internally below the base of the anterior tentacles.
6. Median lip nerves are thick, originate anterior to the previous ones, and extend to the anterior tentacle muscles. At the proximal end of the anterior tentacle muscle the median



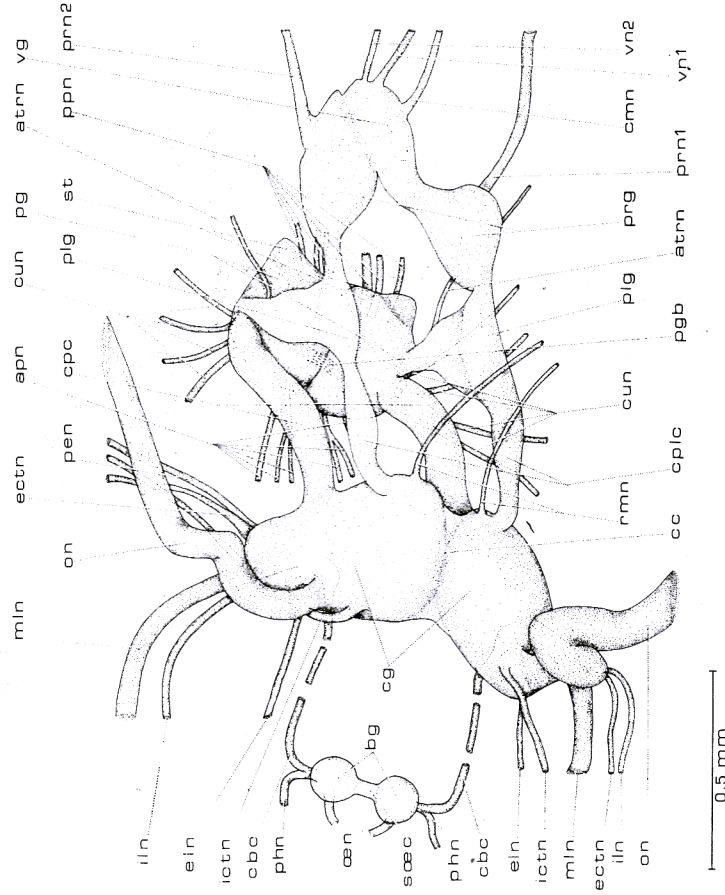


Plate 35  
Dorsal view of central nervous system of *Oxychilus agostinhoi*.

- apn*, anterior pedal nerves  
*atrn*, anterior tentacle retractor nerve  
*bg*, buccal ganglia  
*cbc*, cerebro-buccal connectives  
*cc*, cerebral commissure  
*cg*, cerebral ganglia  
*cmn*, columellar muscle nerve  
*cpc*, cerebro-pedal connectives  
*cpic*, cerebro-pleural connectives  
*cun*, cutaneous nerves  
*ectn*, external circumtentacular nerve  
*eln*, external lip nerve  
*ictn*, internal circumtentacular nerve  
*ihn*, internal lip nerve  
*ihn*, median lip nerve  
*oen*, oesophageal nerves  
*on*, ocular nerve  
*pen*, penial nerve  
*pg*, pedal ganglia  
*pgb*, pedal ganglia bridge  
*phn*, pharyngeal nerves  
*plg*, pleural ganglia  
*ppn*, posterior pedal nerves  
*prg*, parietal ganglia  
*prn 1 - prn 2*, parietal nerves  
*rmn*, radular muscle nerves  
*soec*, suboesophagium commissure  
*st*, statocyst  
*vg*, visceral ganglion  
*vn 1 - vn 2*, visceral nerves

lip nerve gives rise to a short anterior tentacle nerve, then divides: one branch has three fusiform thickenings and the other one two; they insert on the base of the anterior tentacles.

7. Radular muscle nerves emerge from the posterior end of the ganglia; the left one loops above and around the left salivary duct; the right nerve curves below the oesophagus.

The right internal circumtentacular, the right ocular and the right external circumtentacular cross the reproductive organs in between the penis and the vagina.

Connectives leaving the cerebral ganglia:

1. Cerebro-buccal connectives, very long, emerge from below the front side of the ganglia and extend to the buccal ganglia, which are located below the proximal end of the oesophagus between the proximal ends of the salivary ducts. The oesophageal nerves emerge from the buccal ganglia, and the pharyngeal nerves from the point of insertion of the cerebro-buccal connectives.
2. Cerebro-pedal connectives, short and thick, emerge from the posterior end of the cerebral ganglia and connect laterally with the pedal ganglia.
3. Cerebro-pleural connectives, short and thick, emerge internal to the previous ones.

Pleural ganglia elongate, twice the diameter of the connectives; bridges to the parietal ganglia very short, tapering downward to the pedal ganglia, and assuming the shape of a triangle; they are about the same size as the other connectives at the point of insertion with the pedal ganglia; at the point of the insertion of the pleuro-pedal connectives emerge the anterior tentacle retractor nerves. The parietal ganglia are asymmetrical; left parietal about the same size as the pleural ganglia, connects to the visceral ganglion through a broad and short connective; from the latero-posterior portion of the left parietal ganglion emerges a parietal nerve, which inserts on the neck, close to the floor of the lung; right parietal larger than the left one, fused with the visceral ganglion, but distinguishable from this one by its outline; it bears also one nerve, which emerges latero-posteriorly and attaches near the pneumostome region. Visceral ganglion about the same size as the right parietal, bears three nerves: the one on the left emerges latero-

posteriorly and inserts into the columellar muscle, the one in the middle disappears into the albumen gland after passing close to the tip of the ventricle, and the one on the right inserts on the lung, in the proximity of the pneumostome. Pedal ganglia broad, circular, somewhat flattened, separated by a commissure similar to the one in the cerebral ganglia, connected dorsally by a bridge of fibrous appearance. They give rise to 18 nerves:

1. Three short pairs emerge posteriorly and sink immediately into the foot.
2. Four pairs (cutaneous) emerge laterally and go to the skin of the neck; both middle right cutaneous cross the genital organs.
3. Two pairs emerge anteriorly; the outside pair continues to the side of the anterior portion of the neck, and the inside pair subdivides into two branches: the outer branch goes to the anterior tip of the foot and the inner branch attaches to the outer edge of the lower mucous glands.

#### REMARKS

According to Riedel (1964) the groups of the genus *Oxychilus* Fitzinger endemic to the Azores are derived from a pre-*Ortizius* type of snail which came to the Azores from Europe sometime during the Tertiary. It gave rise to:

1. The subgenus *Ortizius* Forcart with three species: *O. (O.) miguelinus* (L. Pfeiffer), *O. (O.) juvenostriatus* Riedel and *O. (O.) ornatus* Riedel.
2. The subgenus *Radiolus* Wollaston, with only one species, *O. (R.) volutella* (L. Pfeiffer).
3. The subgenus *Drouetia* Gude, with until now, a single polytypic species, *O. (D.) atlanticus* s.l., which includes at least three subspecies: *O. (D.) atlanticus atlanticus* (Morelet and Drouet), *O. (D.) atlanticus minor* (Morelet) and *O. (D.) atlanticus brincki* Riedel.
4. The subgenus *Atlantoxychilus* Riedel, with one species, *O. (A.) spectabilis* (Morelet), which arose from the subgenus *Drouetia* Gude.

Reported from Santa Maria are: *Oxychilus (O.) miguelinus*, *O. (R.) volutella*, *O. (D.) atlanticus brincki* and *O. (A.) spectabilis*.



Table 2. Comparative table of the characteristics of the Azorean species of the subgenera *Oritizius* Forcart, *Drouetia* Gude and *Atlantioxychilus* Riedel, and of *Oxychilus* (*Drouetia*) *agnostinhoi* n. sp. Partly based on data from Riedel (1964).

| TAXONOMIC UNIT |       | SHELL     |               |                |                     |           |     |    |              |           |           | RADULA |    |    |         |    |    |         |                 |                     |                |            |           |           |              |                    |        |                 |          |           |
|----------------|-------|-----------|---------------|----------------|---------------------|-----------|-----|----|--------------|-----------|-----------|--------|----|----|---------|----|----|---------|-----------------|---------------------|----------------|------------|-----------|-----------|--------------|--------------------|--------|-----------------|----------|-----------|
| MD             | W     | SP        | AP            | U              | COL                 | MIC       | T/R | R  | CC           | PE (ext.) | PE (int.) | PVG    | MD | W  | SP      | AP | U  | COL     | MIC             | T/R                 | R              | CC         | PE (ext.) | PE (int.) | PVG          |                    |        |                 |          |           |
| 5.5            | 10    | 4 1/2     | some-<br>what | depressed      | and<br>translucent; | fine to   | 31  | 34 | longer than  | 10        | 46        | 39     | 41 | 54 | lateral | 41 | 54 | lateral | no constriction | strong longitudinal | weakly to well | developed; | slightly  | pigmented | also present | transverse furrows | darkly | well developed; | slightly | pigmented |
| 15.0           | 5 1/4 | oblique   | marked        | compact        | bands moderately    | compact   | 41  | 54 | longer than  | 10        | 46        | 39     | 41 | 54 | lateral | 41 | 54 | lateral | no constriction | strong longitudinal | weakly to well | developed; | slightly  | pigmented | also present | transverse furrows | darkly | well developed; | slightly | pigmented |
| 7.0            | 5     | raised to | some-<br>what | parent uniform | very fine           | very fine | 41  | 54 | longer than  | 10        | 46        | 39     | 41 | 54 | lateral | 41 | 54 | lateral | no constriction | strong longitudinal | weakly to well | developed; | slightly  | pigmented | also present | transverse furrows | darkly | well developed; | slightly | pigmented |
| 9.0            | 6     | raised    | oblique       | parent uniform | very fine           | very fine | 41  | 54 | longer than  | 10        | 46        | 39     | 41 | 54 | lateral | 41 | 54 | lateral | no constriction | strong longitudinal | weakly to well | developed; | slightly  | pigmented | also present | transverse furrows | darkly | well developed; | slightly | pigmented |
| 5.5            | 5     | raised    | some-<br>what | parent uniform | very fine           | very fine | 41  | 54 | longer than  | 10        | 46        | 39     | 41 | 54 | lateral | 41 | 54 | lateral | no constriction | strong longitudinal | weakly to well | developed; | slightly  | pigmented | also present | transverse furrows | darkly | well developed; | slightly | pigmented |
| 5.1            | 4 1/4 | very flat | depressed     | parent uniform | very fine           | very fine | 29  | 42 | same size as | 10        | 46        | 39     | 41 | 54 | lateral | 41 | 54 | lateral | no constriction | strong longitudinal | weakly to well | developed; | slightly  | pigmented | also present | transverse furrows | darkly | well developed; | slightly | pigmented |
|                |       |           |               |                |                     |           | 29  | 42 | same size as | 10        | 46        | 39     | 41 | 54 | lateral | 41 | 54 | lateral | no constriction | strong longitudinal | weakly to well | developed; | slightly  | pigmented | also present | transverse furrows | darkly | well developed; | slightly | pigmented |

AP – aperture  
 CC – central cusp of central tooth  
 COL – external appearance and coloration  
 MD – maximum diameter in mm  
 MIC – microsculpture  
 PE (ext) – external morphology of penis  
 PE (int) – internal morphology of penis  
 PVG – perivaginal gland  
 R – number of rows of teeth  
 SP – spine  
 T/R – number of teeth per row  
 U – umbilicus  
 W – number of whorls

| TAXONOMIC UNIT |       | SHELL     |               |                |                     |           |     |    |              |           |           | RADULA |    |    |         |    |    |         |                 |                     |                |            |           |           |              |                    |        |                 |          |           |
|----------------|-------|-----------|---------------|----------------|---------------------|-----------|-----|----|--------------|-----------|-----------|--------|----|----|---------|----|----|---------|-----------------|---------------------|----------------|------------|-----------|-----------|--------------|--------------------|--------|-----------------|----------|-----------|
| MD             | W     | SP        | AP            | U              | COL                 | MIC       | T/R | R  | CC           | PE (ext.) | PE (int.) | PVG    | MD | W  | SP      | AP | U  | COL     | MIC             | T/R                 | R              | CC         | PE (ext.) | PE (int.) | PVG          |                    |        |                 |          |           |
| 5.5            | 10    | 4 1/2     | some-<br>what | depressed      | and<br>translucent; | fine to   | 31  | 34 | longer than  | 10        | 46        | 39     | 41 | 54 | lateral | 41 | 54 | lateral | no constriction | strong longitudinal | weakly to well | developed; | slightly  | pigmented | also present | transverse furrows | darkly | well developed; | slightly | pigmented |
| 15.0           | 5 1/4 | oblique   | marked        | compact        | bands moderately    | compact   | 41  | 54 | longer than  | 10        | 46        | 39     | 41 | 54 | lateral | 41 | 54 | lateral | no constriction | strong longitudinal | weakly to well | developed; | slightly  | pigmented | also present | transverse furrows | darkly | well developed; | slightly | pigmented |
| 7.0            | 5     | raised to | some-<br>what | parent uniform | very fine           | very fine | 41  | 54 | longer than  | 10        | 46        | 39     | 41 | 54 | lateral | 41 | 54 | lateral | no constriction | strong longitudinal | weakly to well | developed; | slightly  | pigmented | also present | transverse furrows | darkly | well developed; | slightly | pigmented |
| 9.0            | 6     | raised    | oblique       | parent uniform | very fine           | very fine | 41  | 54 | longer than  | 10        | 46        | 39     | 41 | 54 | lateral | 41 | 54 | lateral | no constriction | strong longitudinal | weakly to well | developed; | slightly  | pigmented | also present | transverse furrows | darkly | well developed; | slightly | pigmented |
| 5.5            | 5     | raised    | some-<br>what | parent uniform | very fine           | very fine | 41  | 54 | longer than  | 10        | 46        | 39     | 41 | 54 | lateral | 41 | 54 | lateral | no constriction | strong longitudinal | weakly to well | developed; | slightly  | pigmented | also present | transverse furrows | darkly | well developed; | slightly | pigmented |
| 5.1            | 4 1/4 | very flat | depressed     | parent uniform | very fine           | very fine | 29  | 42 | same size as | 10        | 46        | 39     | 41 | 54 | lateral | 41 | 54 | lateral | no constriction | strong longitudinal | weakly to well | developed; | slightly  | pigmented | also present | transverse furrows | darkly | well developed; | slightly | pigmented |
|                |       |           |               |                |                     |           | 29  | 42 | same size as | 10        | 46        | 39     | 41 | 54 | lateral | 41 | 54 | lateral | no constriction | strong longitudinal | weakly to well | developed; | slightly  | pigmented | also present | transverse furrows | darkly | well developed; | slightly | pigmented |

Despite a thorough search of Santa Maria, I failed to collect the first two species. *Oxychilus* (*D.*) *atlanticus* *brincki* is considered endemic to Santa Maria; however, some specimens I collected on Terceira Island are very similar to this subspecies although they possess a much longer epiphallus. Anatomical studies are needed in both groups to determine whether or not they are conspecific.

*Oxychilus* (*D.*) *agostinhoi* shares characteristics with species of the subgenus *Ortizius* as well as of the subgenera *Drouetia* and *Atlantoxychilus*. This can be easily seen in Table 2. Other characteristics of the new species, not included in Table 2 due to lack of comparative data are:

1. The fine spiral lines on the shell are crossed by finer more compact axial lines, more easily visible in less transparent specimens. This pattern is stronger in *O. (D.) atlanticus* *brincki*, and weaker in *O. (A.) spectabilis*.
2. The absence of large light-dark patches in the mantle which are visible through the shell of *O. (A.) spectabilis* and all subspecies of *O. (D.) atlanticus*.
3. The grayish to white foot of *O. (D.) agostinhoi* relates it to species of *Ortizius*; the foot of *Drouetia* group is usually deeply colored, yellow to brilliant orange.
4. The mandible is identical to that of *O. (D.) atlanticus* *brincki*, but very different from the narrow, fragile mandible of *O. (A.) spectabilis*. Lack of material does not permit a comparison with other subspecies of *O. (D.) atlanticus* or with the endemic species of *Ortizius*.

In spite of these differences, I feel that the establishment of a new subgenus is unwarranted and that, based on the shell and internal structure of the penis, this species belongs in the subgenus *Drouetia*. However, its relationship to other species of *Oxychilus* endemic to the Azores elucidates the phylogenetic position of the up-to-now monotypic, endemic subgenus *Drouetia*. Its resemblance to the recent Azorean species of the subgenus *Ortizius* supports the hypothesis of Riedel (1964). Based only on these resemblances, for there is no fossil record, I think that *Oxychilus* (*Drouetia*) *agostinhoi* probably arose from the branch leading to the *O. (D.) atlanticus* s. l. before the origin of the subgenus *Atlantoxychilus* (Plate 36).

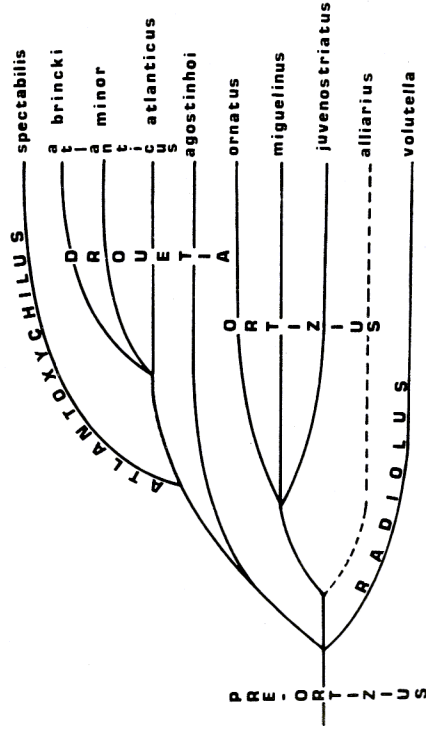


Plate 36

Diagrammatic representation of the relationship of the Azorean species of *Oxychilus* Fitzinger, except for *Oxychilus s.* (Adapted from Riedel, 1964).

— species and groups endemic to the Azores

- - - species living also in Europe

## LITERATURE CITED

- BACKHUIS, W. 1975. Zoogeography and Taxonomy of the Land and Freshwater Molluscs of the Azores, XII + 350 pp.; 105 figs., XXXII pls., 97 maps, Amsterdam.
- BARGMANN, H. E. 1930. The morphology of the central nervous system in the Gastropoda Pulmonata. *J. Linn. Soc. Lond.* 37(250): 1-59, 4 text figs., 5 pls.
- FORCART, L. 1957. Taxionomische revision paläarktischer Zonitinae. *I. Arch. Moll.*, 86: 101-136, 19 figs.
- FRANC, A. 1968. [in] *Traité de Zoologie*, P.-P. Grassé - Tome V, Mollusques Gastéropodes et Scaphopodes, Pulmonés: 325-607, figs. 173-309, Masson & Cie, Paris.
- FRETTER, V. AND A. GRAHAM. 1962. *British Prosobranch Molluscs*, XVI + 755 pp., 317 figs. Ray Society, London.
- GUDE, G. D. 1911. Note on some preoccupied molluscan generic names and proposed new genera of the family Zonitidae. *Proc. Malac. Soc. Lond.*, 9: 269-273.
- MORELET, A. 1860. Notice sur l'histoire naturelle des Açores suivie d'une description des Mollusques terrestres de cet archipel. 214 pp., 5 pls., Paris.
- MORELET, A. AND H. DROUET. 1857. *Conchologiae Azonicae prodromus novarum specierum diagnoses sistens*. *J. de Conch.*, 6, 2<sup>e</sup> série, Tome 11<sup>e</sup>: 148-153, Paris.
- NOBRE, A. 1924. Contribuições para a fauna dos Açores. *Anais Inst. Zool. Univers. Porto*, 1: 41-90, 8 pls.
- \_\_\_\_\_. 1930. Materiais para o estudo da fauna dos Açores. 108 pp., 24 figs., Porto.
- RIEDEL, A. 1957. Revision der Zonitiden Polens (Gastropoda). *Ann. zool. Warszawa*, 16: 361-464, 51 figs., 1 map, pl. 46.
- \_\_\_\_\_. 1964. Zonitidae (Gastropoda) der Azoren. *Bol. Mus. Munic. Funchal, XVIII*, Art. 66: 5-60, 43 figs., 1 pl.
- \_\_\_\_\_. 1966. Zonitidae (excl. Daubeardiinae) der Kaukasusländer (Gastropoda). *Ann. Zool. Warszawa*, 24: 2-285, 254 figs., 6 pls., 18 maps.
- RIGBY, J. E. 1963. Alimentary and reproductive systems of *Oxychilus cellarius* (Müller) (Stylommatophora). *Proc. Zool. Soc. Lond.*, 141(2): 311-359, 8vc, 18 figs.
- SMROTH, H. 1908-1926. Pulmonata [in] Bronn's, "Klassen und Ordnungen des Tierreichs", 3(2): 1-963.
- WOLLASTON, T. V. 1878. Testacea Atlantica or the land and freshwater shells of the Azores, Madeira, Salvages, Canaries, Cape Verdes and Saint Helena. XI + 588 pp., Reeve & Co. London.
- ZITCH, A. 1959. *Gastropoda*, Teil 2 - Euthyneura, Lief. 2 [in] O. H. Schindewolf, "Handbuch der Paläozoologie", Bd. 6, pp. 201-400, figs. 702-1434, Bomtrager Verlag, Berlin.